



# MH920 Console International Installation Manual

**OKI** Oki Electric Industry Co., Ltd.

## Table of Contents

1. Preface .....	3
2. System requirements .....	3
3. Installing the maintenance console .....	4
4. Installing the USB Driver .....	8

### 【About trademark】

- Microsoft®, Windows®, Internet Explorer® are registered trademarks or trademarks of Microsoft® Corporation in the United States and other countries.
- Windows® 7, Windows® 8.1, and Windows® 10 are operating systems.
- Screen shots in this manual are used in accordance with Microsoft Corporation's guidelines.
- Other company names and product names mentioned in this manual are generally trademarks or registered trademarks of each company.

### 【Others】

- Oki is not responsible for any effect caused by the results of using this product and this manual.
- Please note that the contents described in this manual are subject to change without notice.
- "Maintenance console" in this manual indicates "MH 920 Console International".
- "Wireless communication module" in this manual indicates "wireless communication module (coordinator module)" and "wireless communication module (router module)".

## 1. Preface

This manual describes the usage of "MH920 Console International" (maintenance console) for setting wireless communication module and installation procedure of USB driver for wireless communication module.

## 2. System requirements

A PC that the maintenance console is to be installed must satisfy the following system requirements. Please check the operating environment of the installing PC before installation.

**Table 1. Hardware requirements**

Component		Minimum requirements
CPU		Core Duo 1GHz equivalent or above
RAM		1GB or above
HDD		100MB minimum free space
Interface		USB version 1.1 or 2.0

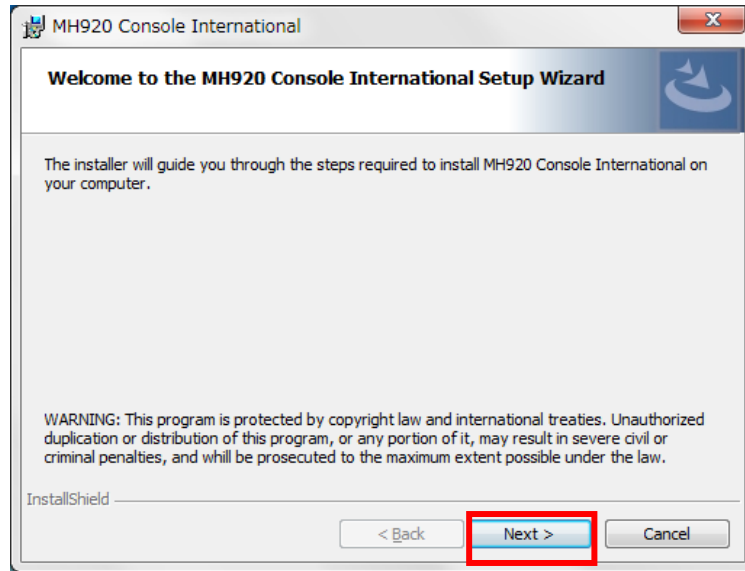
**Table 2. Software requirements**

Component		Minimum requirement
OS	Version	Windows® 7 Professional SP1 (32bit) Windows® 8.1 (64bit) Windows® 10 (64bit)
	Language	English Korean Thai Traditional Chinese English + Vietnamese Language pack
Runtime		Microsoft .NET Framework version 4.0

### 3. Installing the maintenance console

The installation procedure of the maintenance console is described below.

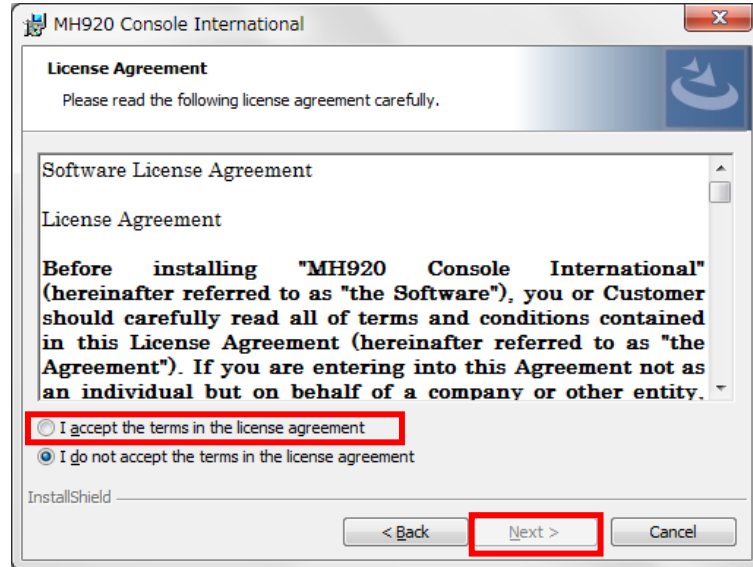
- (1) Extract the downloaded file of maintenance console.
- (2) Execute "mh920consoleInternational.msi" in the extracted files and start the maintenance wizard setup wizard. On the "Setup Wizard" screen, press the "Next" button.



**Figure 1. Setup Wizard**

- \* If Microsoft .NET Framework 4 is not installed, a message box that require installation should be displayed. After installing Microsoft .NET Framework 4, execute mh920console\_module.msi again.  
(<http://go.microsoft.com/fwlink/?LinkId=131000>)

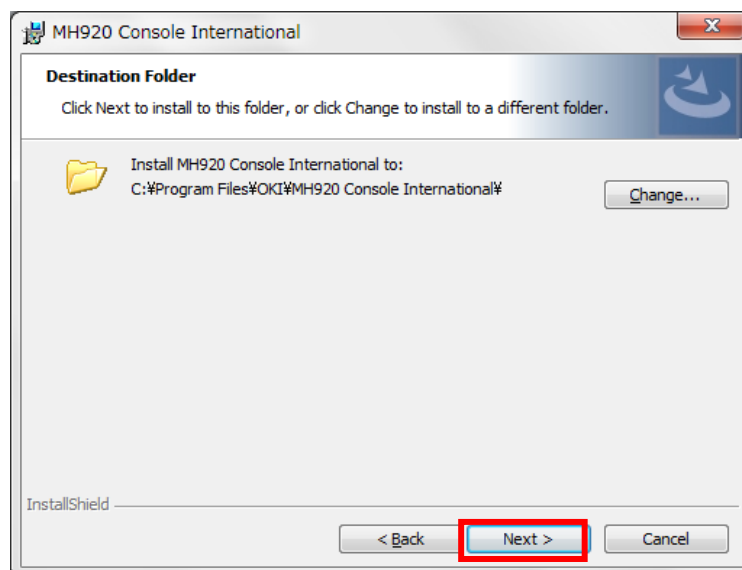
- (3) Read the license Agreement to the end with the scroll bar, select "I accept the terms in the license agreement", then press the "Next" button.



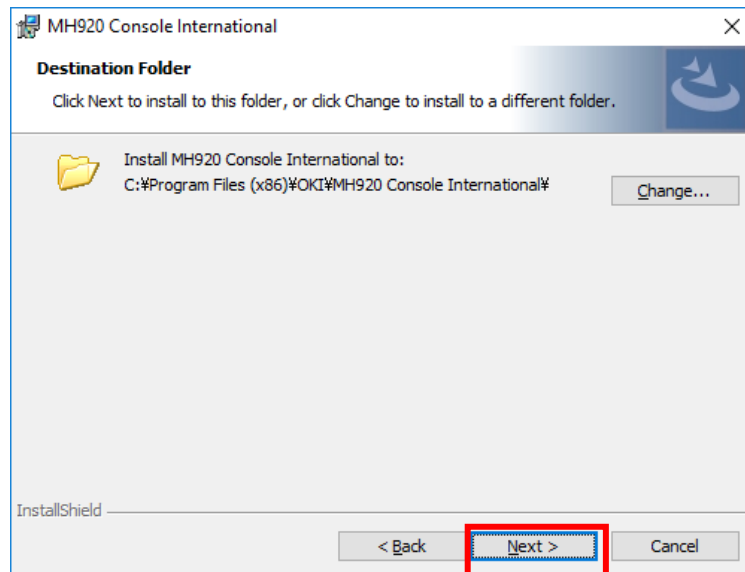
**Figure 2. License Agreement dialog**

- (4) On the "Destination Folder" dialog box, select the installation folder and click "Next" button. Default location of an installation folder is as follows depending on the Operating System of the destination PC.

- For 32bit OS  
C: ¥ Program Files ¥ OKI ¥ MH920 Console International¥
- For 64bit OS  
C: ¥ Program Files (x86) ¥ OKI ¥ MH920 Console International¥



**Figure 3-1. Installation Folder Selection dialog (32 bit OS)**



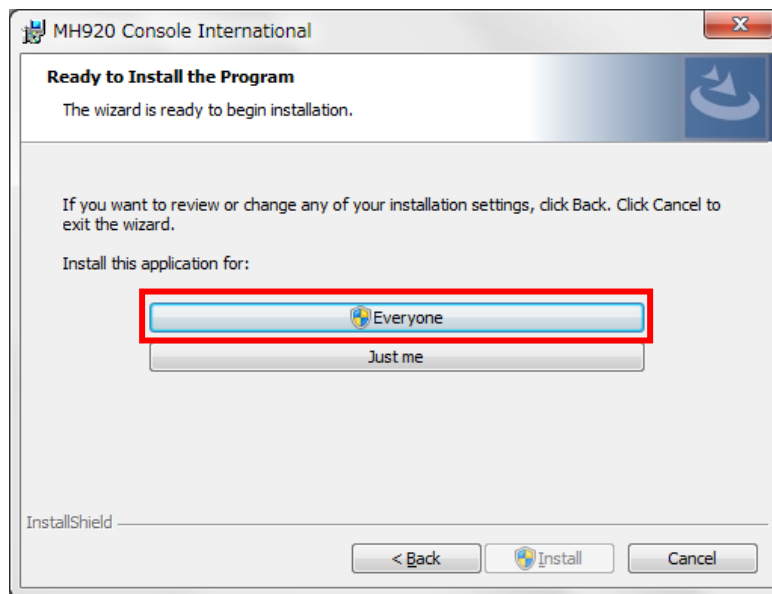
**Figure 3-2. Installation Folder Selection dialog (64 bit OS)**

- (5) On the "Set Country" message box, select a country and click "Next" button.



**Figure 4. Set Country dialog**

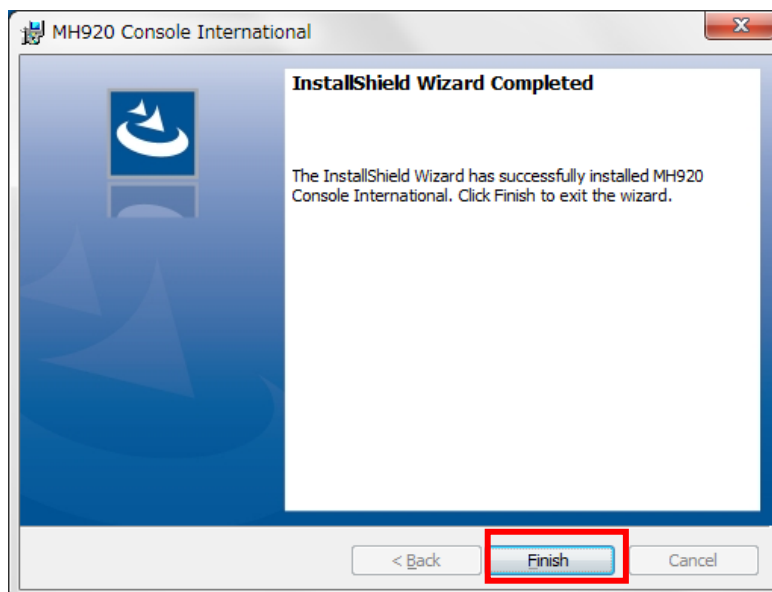
- (6) On the "Ready to Install the Program" message box, press the "Everyone" button.



**Figure 5. Confirm Installation message**

- \* If a "User Account Control" dialog box is displayed and asked for confirmation of permission to change, please click the "Yes" button.

- (7) After the "InstallShield Wizard Completed" message box is displayed, click the "Finish" button to finish the installation.



**Figure 6. Installation Complete message box**

## 4. Installing the USB Driver

A USB driver is required before connecting the wireless communication module to the PC. The installation procedure of the USB driver is shown below.

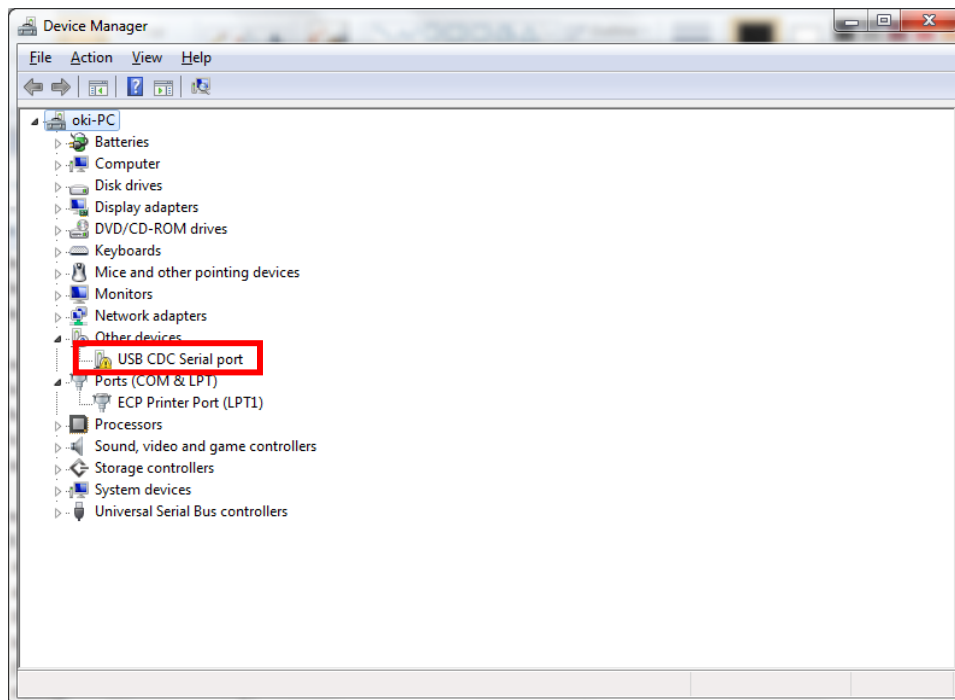
- (1) When using a product with the communication module built-in, connect the USB connector for the maintenance console on the motherboard of the product to the PC.
- (2) When using the evaluation board, connect the USB connector on the evaluation board to the PC. Turn on the power switch while turning on the slide switch (MOD button) on the evaluation board. Module will be activated in a state without emitting radio wave. For details of the slide switch (MOD button), please refer to "MH920 Wireless Communication Module Evaluation Board Operation Manual".
- (3) After a while, a message box will be displayed on the PC stating that the driver of the wireless communication module cannot be found. If the driver installation dialog box is displayed, cancel without installing at this time.

After this process, carry out (4), (5) and (6) if Operating System of the destination PC is either Windows 7 or Windows 8.1. For Windows 10, carry out (7), (8) and (9).



For Windows 7 or Windows 8.1

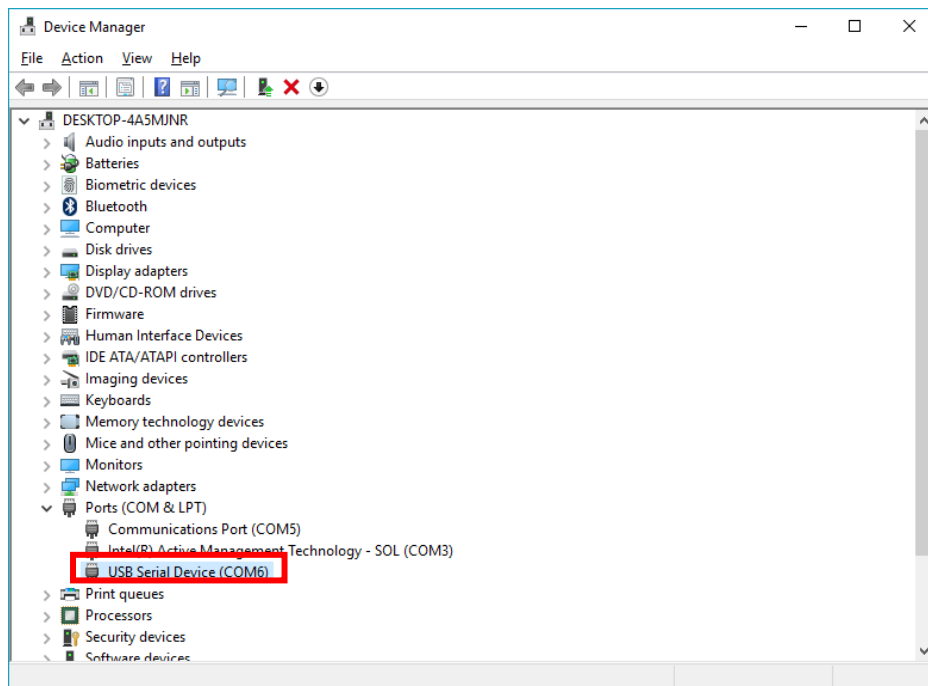
- (4) Select "Control Panel" from the start menu.
- (5) Select "Device Manager" from the displayed list and expand the "Other devices" section.
- (6) Find "USB CDC Serial port" in the "Other devices" list. Right click the USB CDC Serial port to display a menu and select "Properties." Then go to (10).



**Figure 7-1. Device Manager (Windows 7, Windows 8.1)**

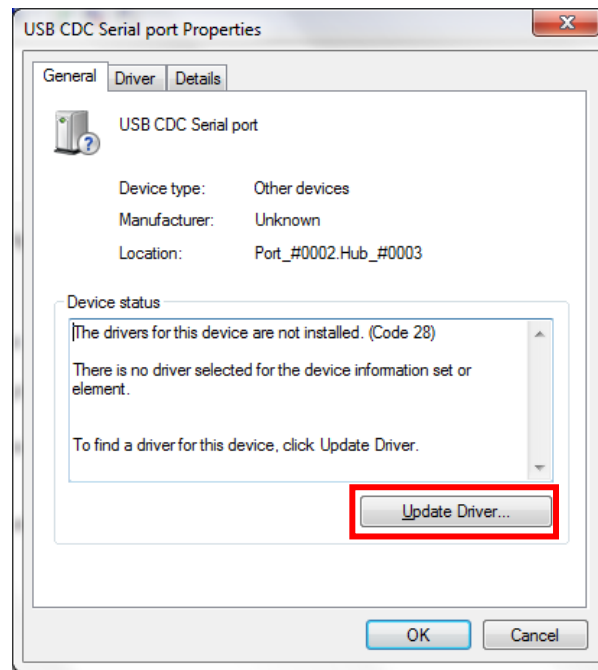
For Windows 10

- (7) Right-click the start button and select "Control Panel".
- (8) Select "Device Manager" from the control panel items list. Expand the "Ports (COM & LPT)" column on the catalog items of Device Manager.
- (9) Find the "USB Serial Device (COM x)" in the "Ports (COM & LPT)" list. Right-click "USB Serial Device (COM x)" to display a menu. Select "Update Driver Software" from the menu and carry out (11).



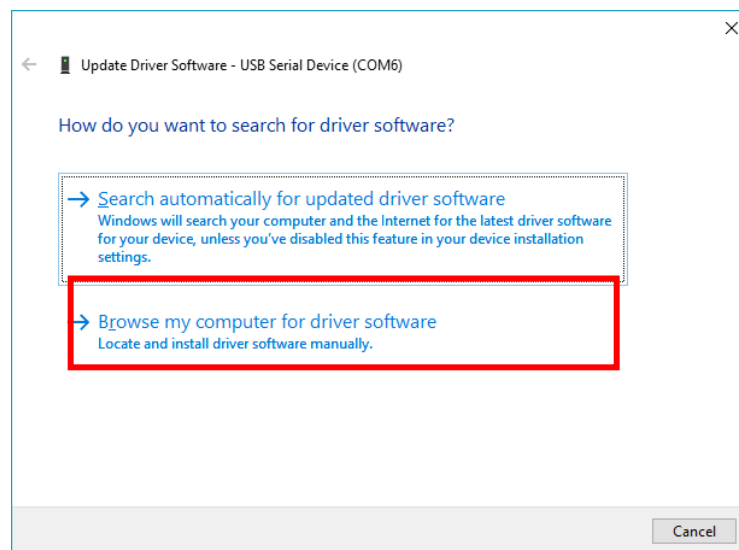
**Figure 7-2. Device Manager (Windows 10)**

- (10) When the "USB CDC Serial port Properties" dialog box is appeared, click the "Update Driver" button to activate the "Update Driver Software" wizard.



**Figure 8. USB CDC Serial port's property" dialog box**

- (11) On the "Update Driver Software" dialog box, select "Browse my computer for driver software".



**Figure 9. Search for driver software dialog box**

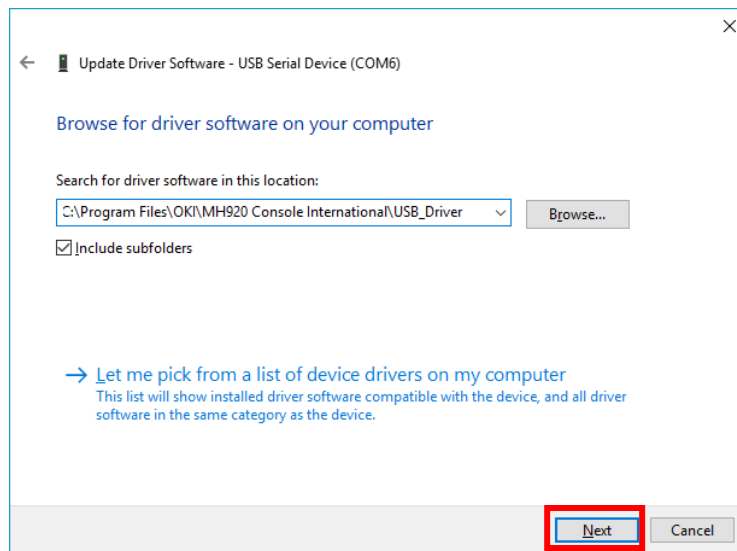
(12) On the "Update Driver Software" dialog box, press "Browse" button, select the installation folder of the maintenance console, and click the "Next" button. The default location of an installation folder is as following depending on the Operating System of the destination PC.

- For 32bit OS

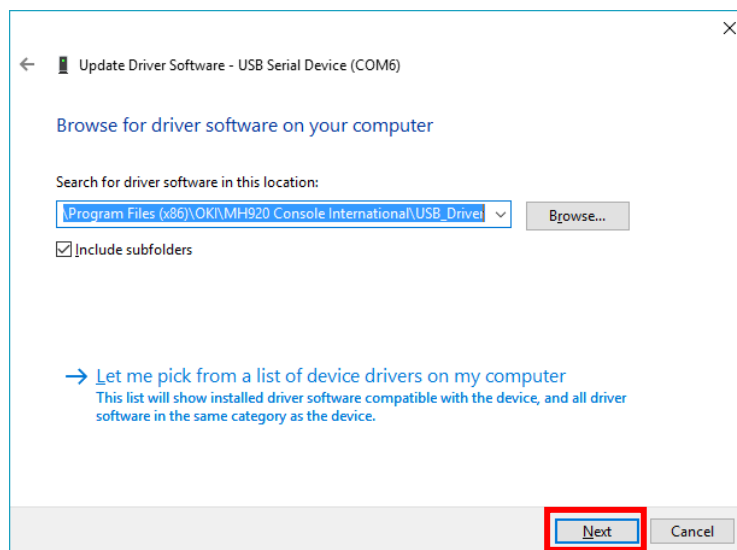
C:\Program Files\OKI\MH920 Console International\USB\_Driver

- For 64bit OS

C:\Program Files (x86)\OKI\MH920 Console International\USB\_Driver

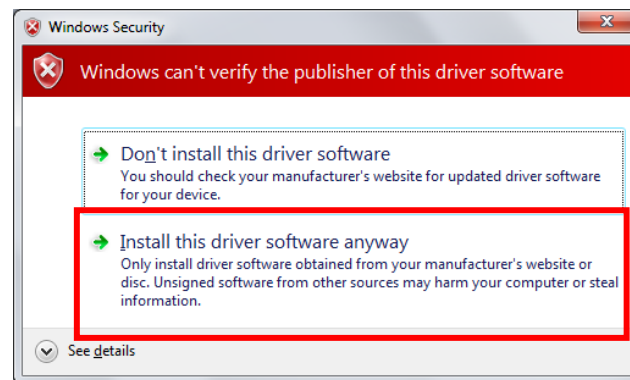


**Figure 10-1. Update Driver Software (32bit OS)**



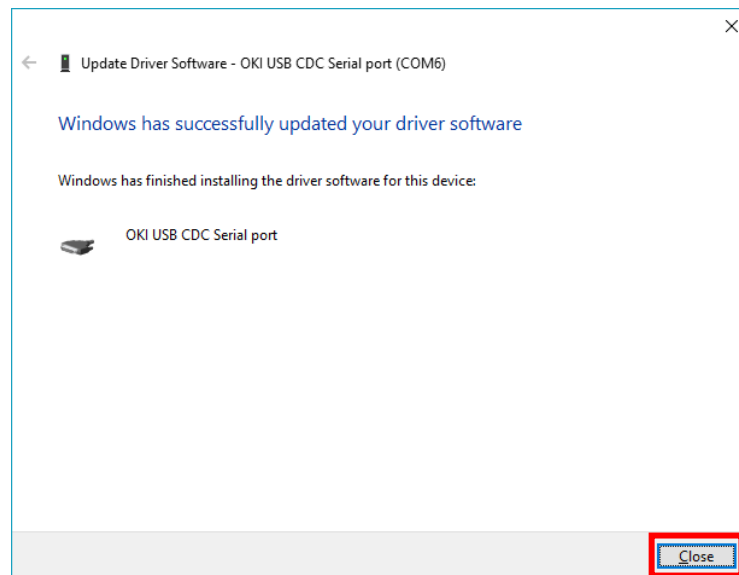
**Figure 10-2. Update Driver Software (64bit OS)**

- (13) If a security warning is displayed, select "Install this driver software anyway" and continue installation.



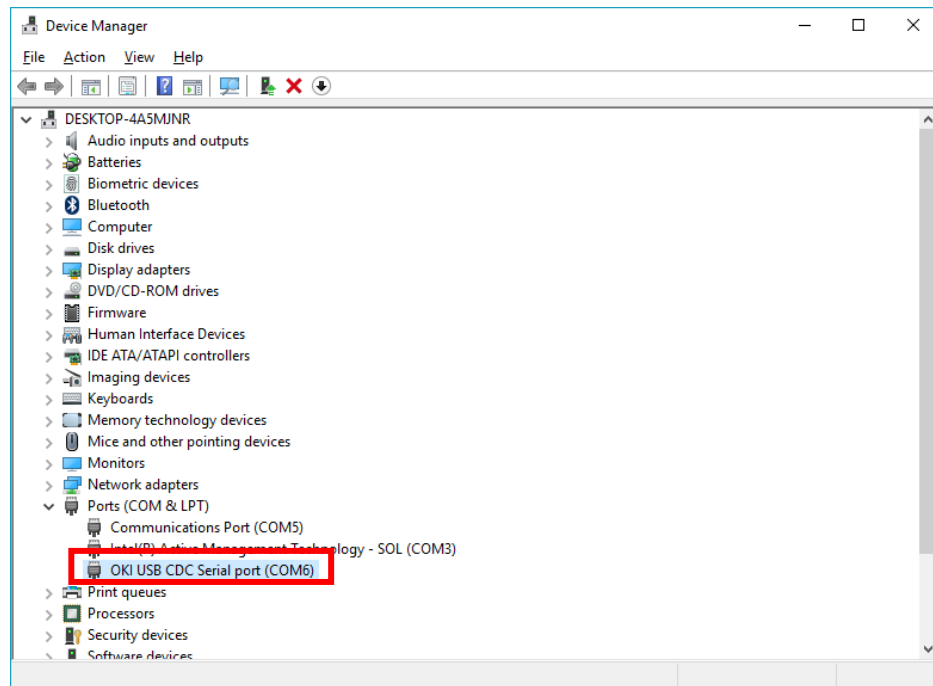
**Figure 11. Windows Security dialog box**

- (14) An "Installing driver" message and an "Installation completed" messages should be displayed.
- (15) On the "Update Driver Software" window, confirm that the driver has been successfully installed and press the "Close" button.



**Figure 12. Update Driver Software**

- (16) Confirm that the port number of "OKI USB CDC Serial port" is displayed in the "Ports (COM & LPT)" column of Device Manager window.



**Figure 13. Device Manager**

\*) When setting up the maintenance console, COM port number should be specified. Remember the COM port number set in the procedure (16). In case of Figure 12 example, COM 6 in "OKI USB CDC Serial port (COM 6)" is the COM port number.

This concludes the installation of the USB driver.

Document No.: MH920-0102-004

Date: May, 2019

Oki Electric Industry Co., Ltd.